

Emma Terry Homes

moving made personal



23 Chatham Street,
Southwell NG25 0EY

Offers over £215,000



23 Chatham Street, Southwell NG25 0EY

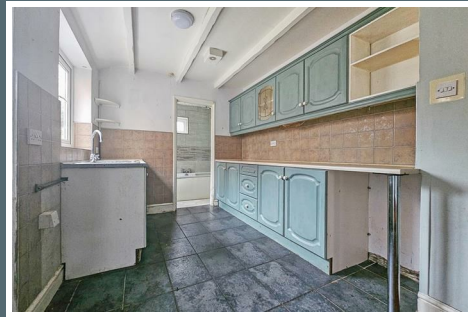
Offers over £215,000

A charming location for this mid-terrace house that is brimming with potential! This property boasts three spacious bedrooms, perfect for a growing family or those in need of a home office space. The open-plan kitchen and dining room offer a wonderful opportunity to create a space that suits your lifestyle.

Situated in the heart of Southwell, this property is primed for someone to add their own unique style and personalisation.

The property benefits from two reception rooms, kitchen and bathroom to the first floor, two bedrooms on the first floor and second floor third bedroom.

Don't miss out on the chance to take on this exciting renovation project in the charming town of Southwell. With its characterful streets and friendly community, this property is sure to be a wonderful place to call home once you've added your personal touch.



Entrance door leads through to:

LOUNGE

13'0 x 11'3 (3.96m x 3.43m)

UPVC double glazed window to the front, feature fireplace, wood flooring and central heating radiator.

DINING ROOM

13'0 x 11'6 (3.96m x 3.51m)

UPVC double glazed window to the rear, log burner, wood flooring, central heating radiator and stairs to the first floor.

KITCHEN

10'0 x 8'0 (3.05m x 2.44m)

Fitted with base and wall units, stainless steel sink and drainer, and glazed door to the side.

BATHROOM

8'0 x 4'6 (2.44m x 1.37m)

Bath with central tap and shower over, hand wash basin, low flush W.C, central heating radiator and UPVC window to the rear.

FIRST FLOOR LANDING

BEDROOM ONE

12'11" x 11'3" (3.96m x 3.43m)

Feature original fireplace, UPVC double glazed window to the front and central heating radiator.

BEDROOM THREE

11'6" x 7'6" (3.51m x 2.29m)

Feature original fireplace, UPVC double glazed window to the rear and central heating radiator.

SECOND FLOOR STAIRS

BEDROOM TWO

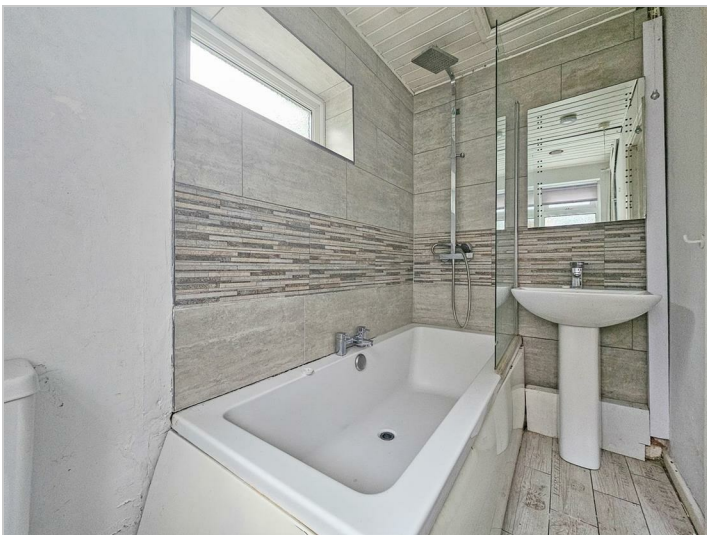
13'0" x 11'9" (3.96m x 3.58m)

UPVC window to the rear and central heating radiator.

OUTSIDE

There is a rear courtyard with gated stone pathway to a delightful and private 'secret garden'. To the borders there is fencing and high hedges providing total privacy, with a lawn area, timber shed and flagstone patio area.

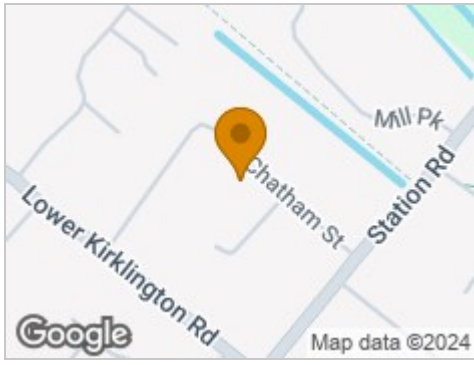








Road Map



Hybrid Map



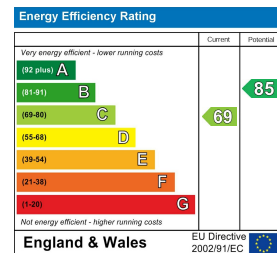
Terrain Map



Viewing

Please contact our Emma Terry Homes Office on 0115 966 57 41 if you wish to arrange a viewing appointment for this property or require further information.

Energy Efficiency Graph



These particulars, whilst believed to be accurate are set out as a general outline only for guidance and do not constitute any part of an offer or contract. Intending purchasers should not rely on them as statements of representation of fact, but must satisfy themselves by inspection or otherwise as to their accuracy. No person in this firm's employment has the authority to make or give any representation or warranty in respect of the property.